

# EXECUTIVE SUMMARY COVID-19 crisis survey

Infographic summary of report's main findings



International Labour Organization

GLOBAL BUSINESS AND DISABILITY NETWORK

In May 2020, the International Labour Organization (ILO)'s Global Business and Disability Network conducted two surveys - one for National Business and Disability Networks and one for those networks' company members - to identify good practices and gaps in responding to the COVID-19 crisis in a disability-inclusive way.



Percentage of companies helping to protect employees with disabilities by providing



Telework



Flexible working hours



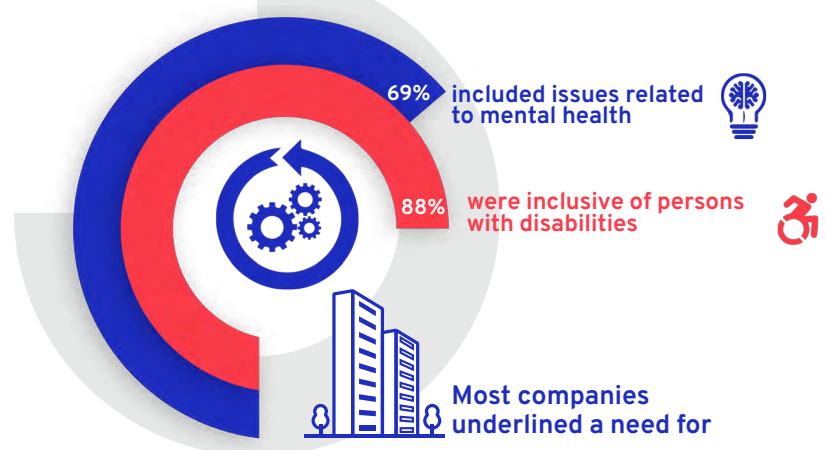
Paid leave



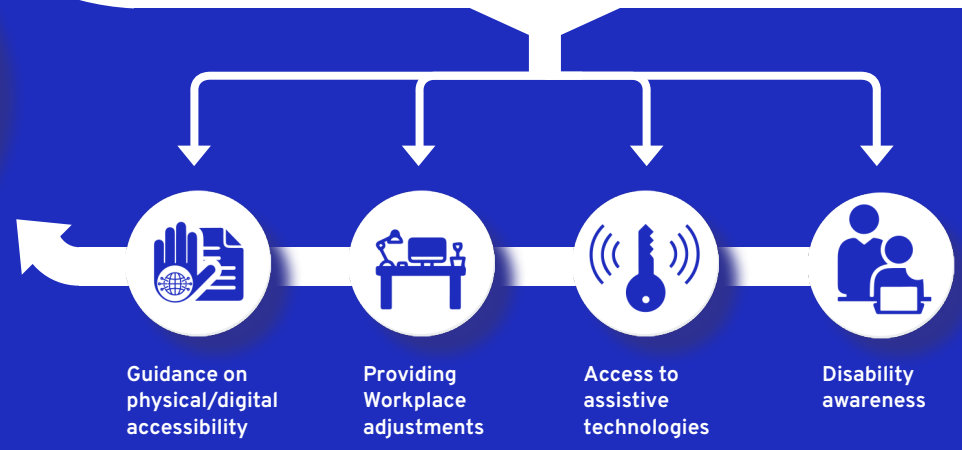
These responses help employees without disabilities, too



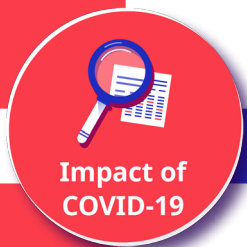
Out of business continuity plans from 122 companies



Both companies and National Networks noted the importance of consultation with organizations of persons with disabilities.



"Do you think that your future disability inclusion activities will be affected by COVID-19?"



"Do you think the COVID-19 crisis poses a threat to the existence of your Network?"

