



# Regional Arab Conference on Inclusive Employment

21 June, 2023

Brendan Roach: Director of Strategy & Networkology



- Established in 2015 following the book *Secrets & Big News*
- Employee Resource Groups/Networks identified as the **vehicles to drive cultural change**
- Next phase of change initiated: **Building disability confidence from the inside out**



# Our employer community of Members and Futurists

PurpleSpace

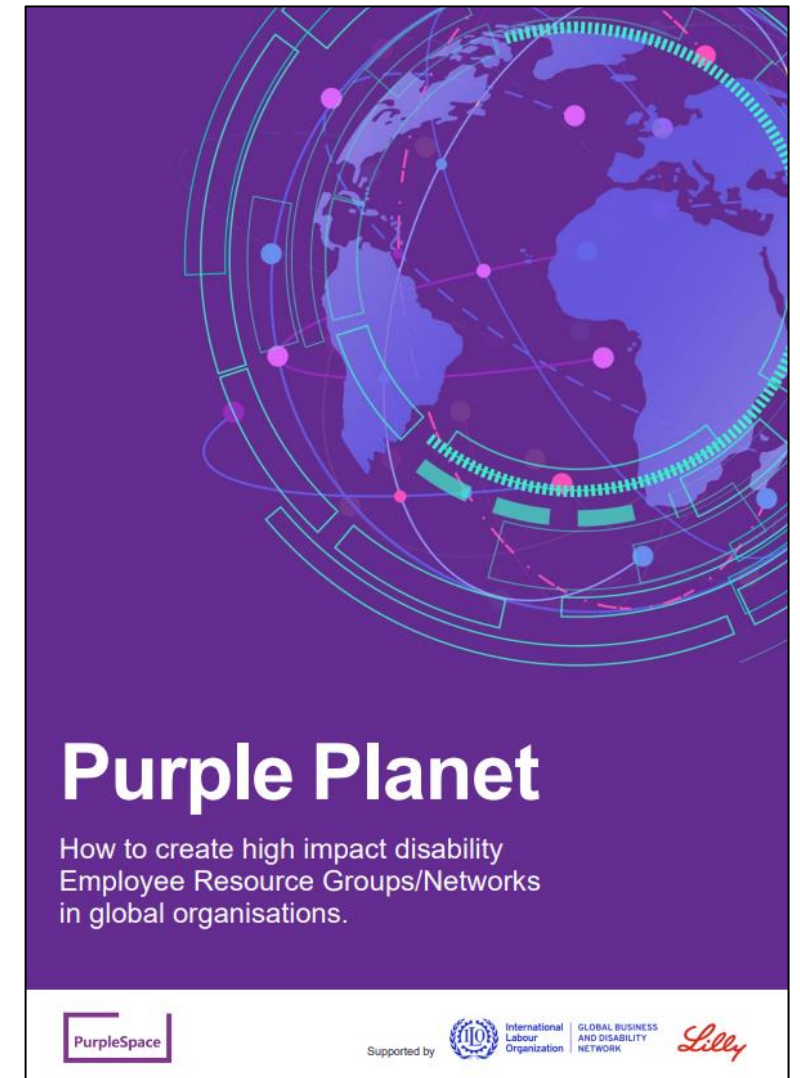


‘Networkology’ is how we describe the art and science of running a high-performing disability ERG/Network.

- **The Art** refers to human skills
- **The Science** refers to the mechanics of running an ERG/Network

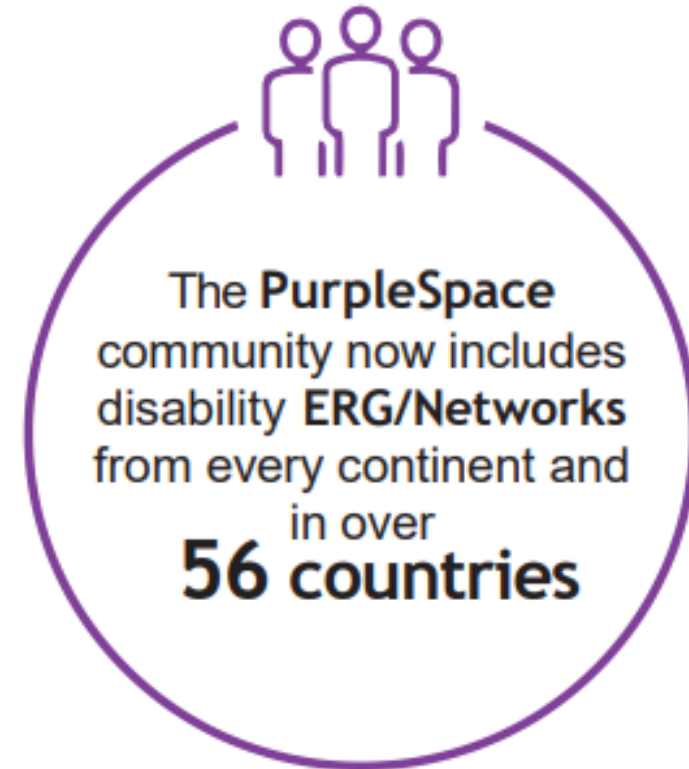
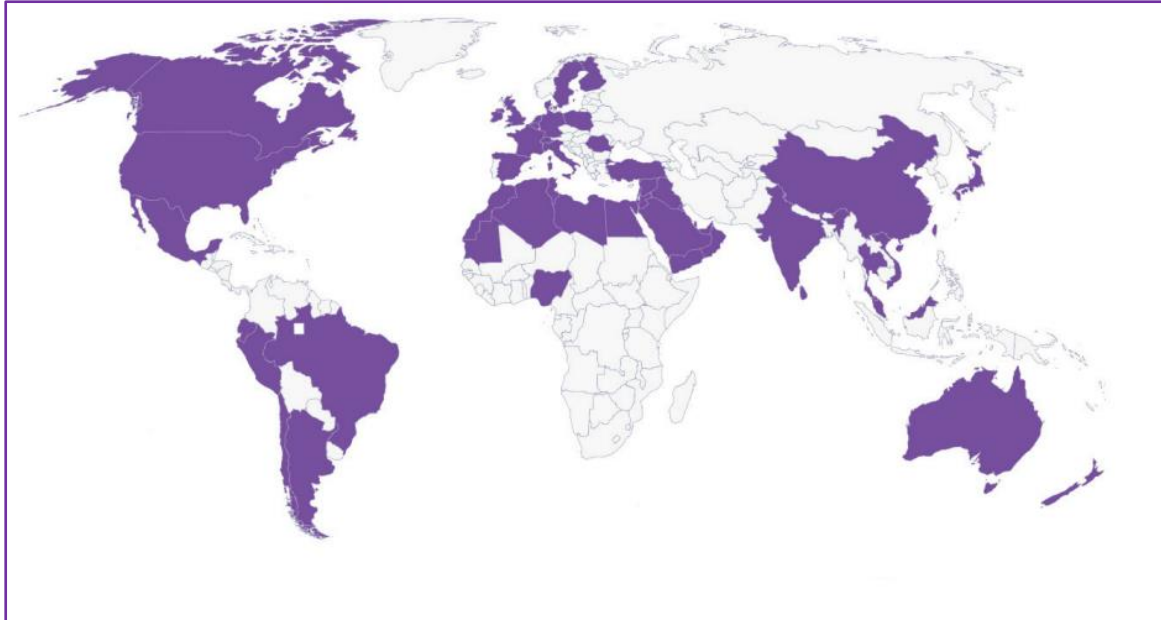


- ‘Purple Planet - How to create high impact disability Employee Resource Groups/Networks in global organisations’.
- Developed in partnership with the ILO GDBN and Eli Lilly and Company.
- Free to download:  
<https://www.purplespace.org/purplespace-global>





# The global growth of disability ERG/Networks



**Disability ERG/Networks are active in:** UAE, Saudi Arabia, Bahrain, Egypt, Iraq, Jordan, Kuwait, Lebanon

# Help us grow the disability ERG/Network movement



[brendan@purplespace.org](mailto:brendan@purplespace.org)



[purplespace.org](http://purplespace.org)



[@mypurplespace](https://twitter.com/mypurplespace)



[facebook.com/mypurplespace](https://facebook.com/mypurplespace)



[linkedin.com/company/purplespace](https://linkedin.com/company/purplespace)